



# Education

Investing in our future

OCTOBER 2017

RESEARCH DOCUMENT

# FUNDING PREK-12 EDUCATION

## Key Facts

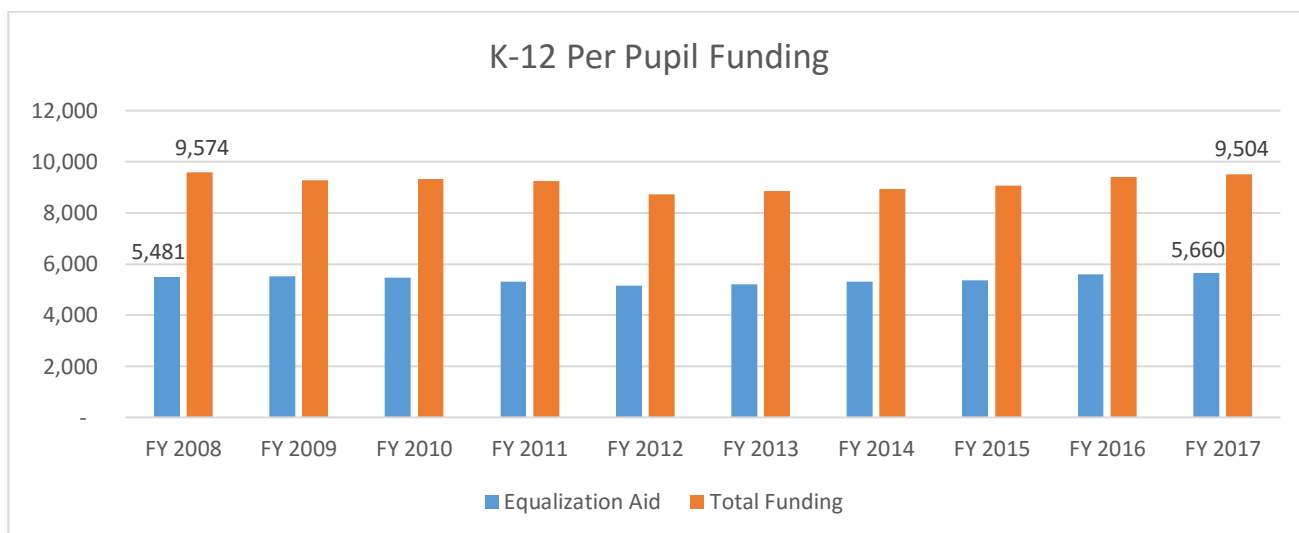
### KEY GOALS & METRICS IN FOR EDUCATION IN ARIZONA

The Center for the Future of Arizona and Expect More Arizona recently launched the “Arizona Education Progress Meter” which has eight primary metrics. The selected metrics and Arizona’s current status are as follows:

- **Post-Secondary Attainment** – In Arizona only 42% of students go on to a 2 or 4-year post-secondary career. Aspire to 60%.
- **College going** – In Arizona 54% of students are college bound compared to 65.9% nationally.
- **Opportunity Youth** – More than 15% of 16-24 year olds are neither in school nor employed which is one of the highest percentages in the US. This translates to 18,100 dropouts per year adding to a total population of about 200,000 with an economic lifetime cost to taxpayers of \$7.6 Billion.
- **High School Graduation** – Arizona’s rate is 79%. The national average is 82%.
- **8<sup>th</sup> Grade Math Proficiency** – Only 26% of 8<sup>th</sup> grade students demonstrate proficient or highly proficient math test scores (one of the key metrics towards future career success and earnings).
- **3<sup>rd</sup> Grade Reading** – Only 41% of 3<sup>rd</sup> grade students scored proficient or highly proficient (one of the key metrics that contributes to a student earning a high school diploma).
- **Pre-School Enrollment** – 38% of 3 to 4 year olds were enrolled in an Arizona pre-school program (note: 90% of a child’s brain develops before kindergarten).
- **Teacher Pay** – Arizona teachers make, on average, 75% of the national average in teacher pay, a shortfall in excess of \$14,000 per year. Several recent reports rank Arizona at the bottom of the states for teacher pay.

### How Much Does the K-12 System Receive

In FY 2017, Arizona will provide approximately \$5,660 per student. Per pupil funding reductions between FY 2009 and FY 2012 were due to adjustments made during the recession. When all sources of funding are considered including federal and local funds, the average per pupil amount jumps to \$9,504.



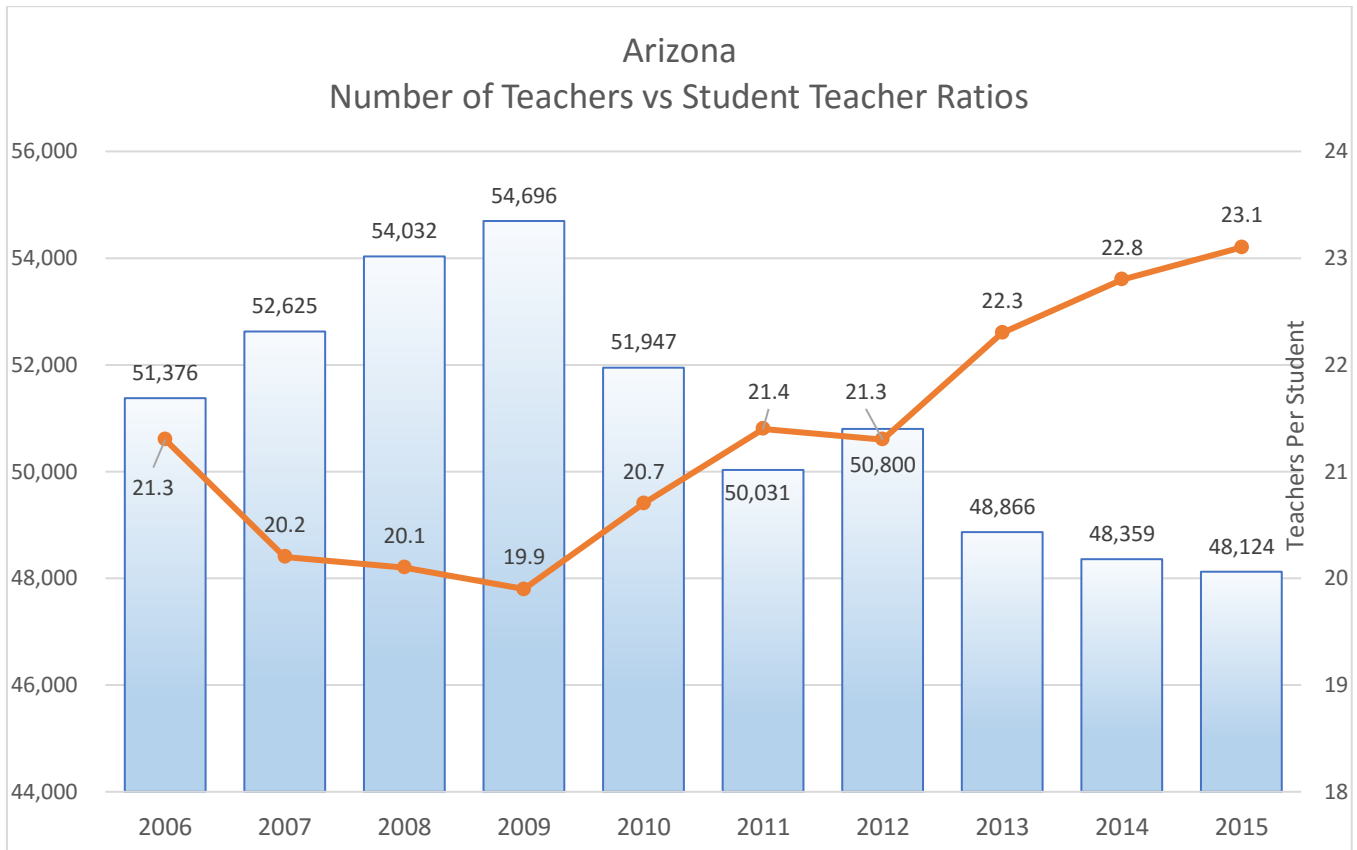
Source: JLBC, *K-12 Funding Since 2008 (Non-Capital Funding Only)*

Arizona spends less than \$35 per thousand of personal income on education, one of only four states in the US with this distinction (Arizona, Idaho, Utah and Oklahoma) in the bottom four in overall state commitment to education spending.

- School districts around the state are unable to hire and retain certified teachers. The teacher shortage has been exacerbated by the inability to provide cost of living raises and competitive salaries.

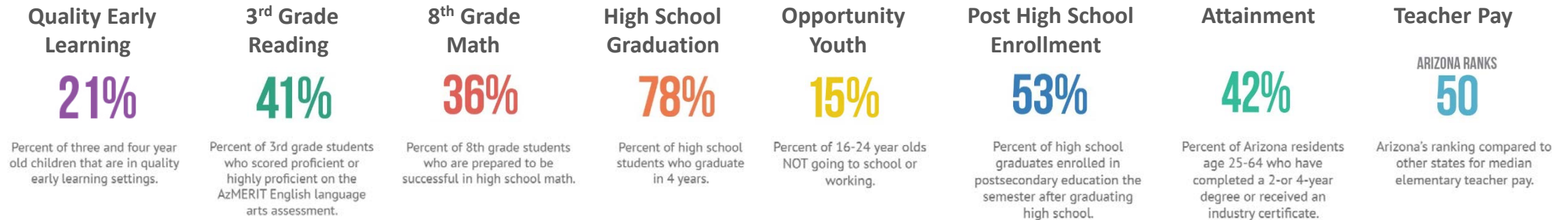
It is projected that 26,122 or 24 percent of Arizona teachers will be eligible to retire by June 30, 2018.

Student teacher ratios: To bring the state to the national average of 16 to 1 would require an additional 21,000 teachers. To return the state to the pre-recession 20 to 1 levels would require 7,460 new teachers.



# Arizona Education Progress Meter

## Where Does Arizona Stand Today?

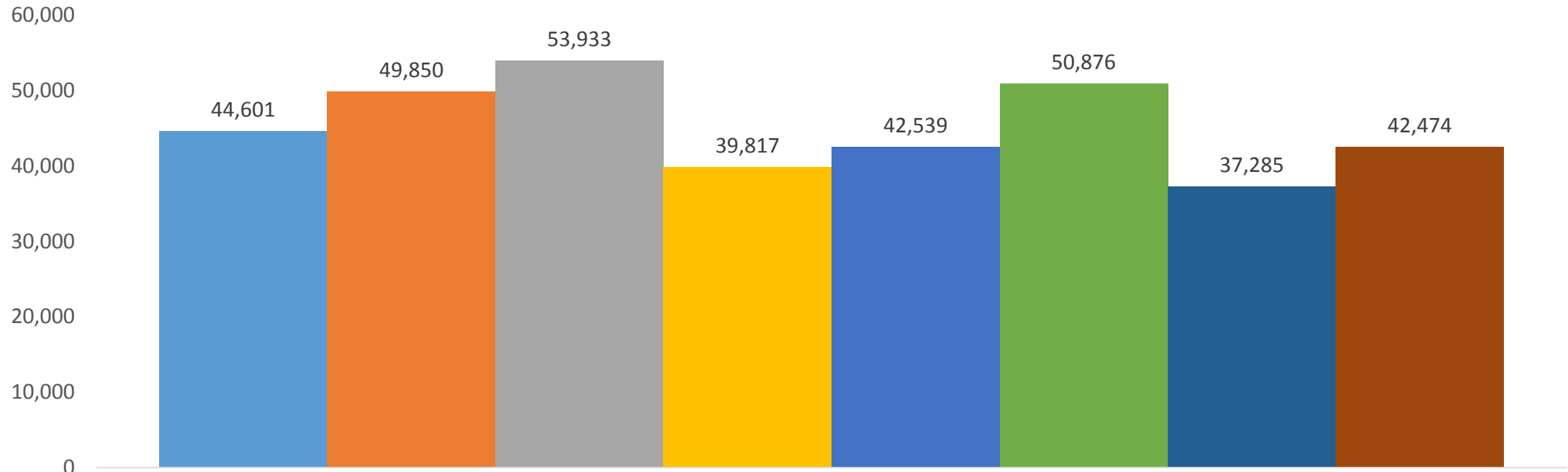


## Where Does Yuma County Stand Today?



*Note:* some indicator data – like that for Quality Early Learning and Teacher Pay – are not available at the county level. The Yuma County data for attainment is only for 25-64 year olds with 2 and 4 year degrees. Industry credential data is not available at the county level. For data sources for each indicator and demographic data, visit [www.expectmorearizona.org/progress](http://www.expectmorearizona.org/progress).

# How Do Yuma County Teacher Salaries Compare to State?

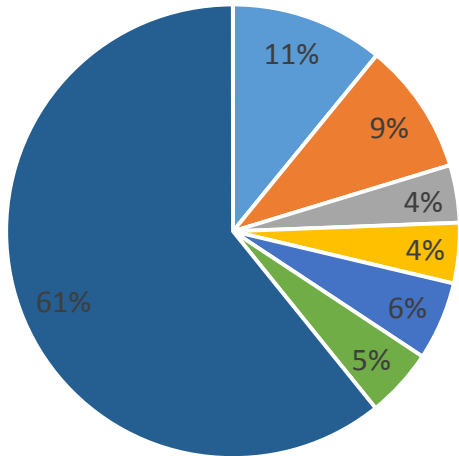


Average Elementary Teacher Salaries by Yuma County School District

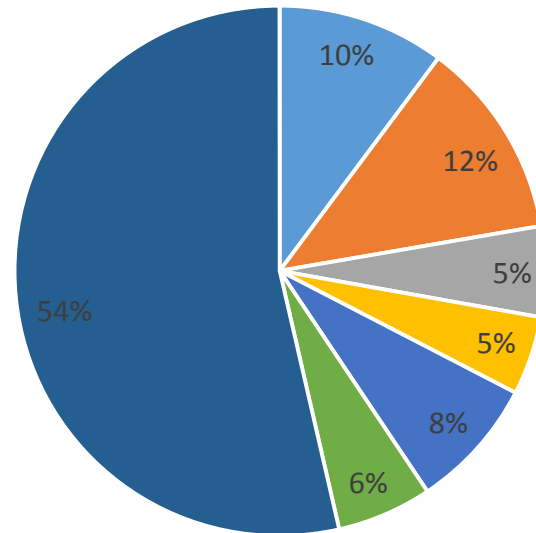
- Crane Elementary School District
- Gadsden Elementary School District
- Hyder Elementary School District
- Mohawk Valley Elementary School District
- Somerton Elementary School District
- Wellton Elementary School District
- Yuma Elementary School District
- State Median

# A Glance at District Spending in Yuma County Compared to State and Country

US

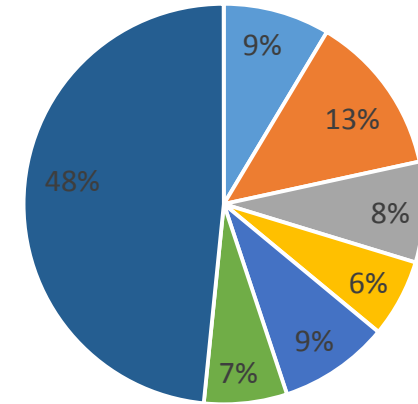


Arizona

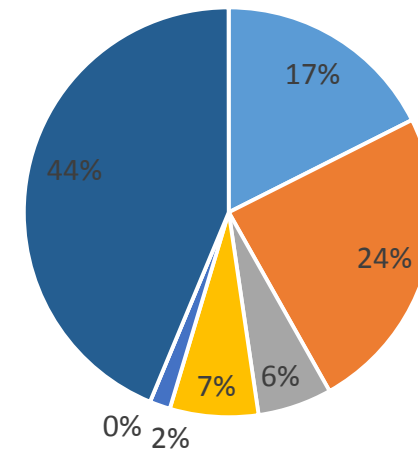


- Admin
- Plant Operations
- Food Services
- Transportation
- Student Support
- Instruction Support
- Instruction

Yuma Union High School District

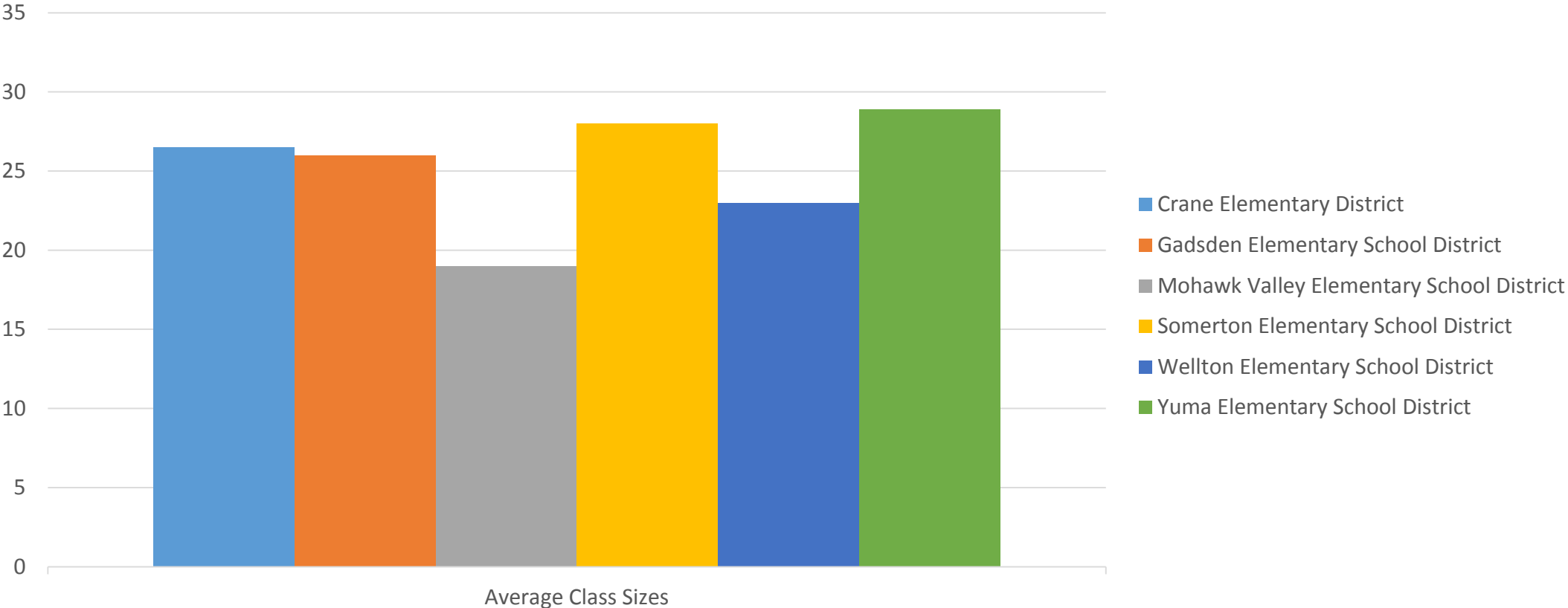


Mohawk Valley School District



*This is not an average or summation of Yuma County district spending. Rather these charts represent a snapshot using the largest school district and the smallest school district in the county as examples. Please reference the document titled "Operational Cost Definitions" for more information on each spending category.*

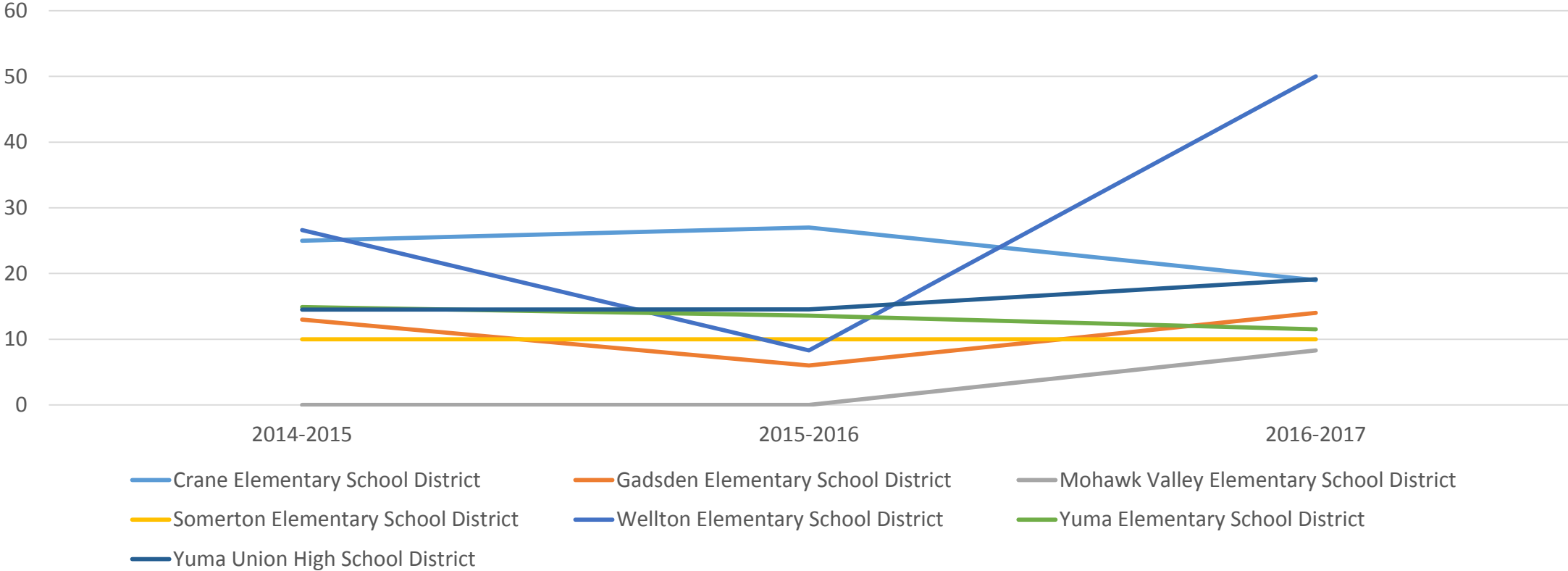
# A Snapshot of Yuma County Class Sizes for Grades K-5



*Note: Data only available for school districts represented in chart. Therefore, this is a snapshot of class sizes in grades K-5 and not comprehensive data across the county.*

# A Look at Yuma County Teacher Retention

Percent of Teachers Leaving the District by Academic Year





## **Operational Cost Definitions**

Administration – Superintendents, principals, business managers, clerical and other staff who perform accounting, payroll, purchasing, warehousing, printing, human resources activities and administrative technology services.

Plant Operations – Heating, cooling, equipment repair, grounds keeping and security.

Food Services – Cost of preparing and serving meals and snacks.

Transportation – Costs of transporting students to and from school and activities.

Student Support – Counselors, audiologists, speech pathologists, nurses, social workers and attendance services.

Instruction Support – Librarians, teacher training, curriculum development and instruction related technology services.

Instruction – Salaries & benefits for teachers and instructional aides, coaches, costs related to instructional supplies, athletics and co-curricular activities.